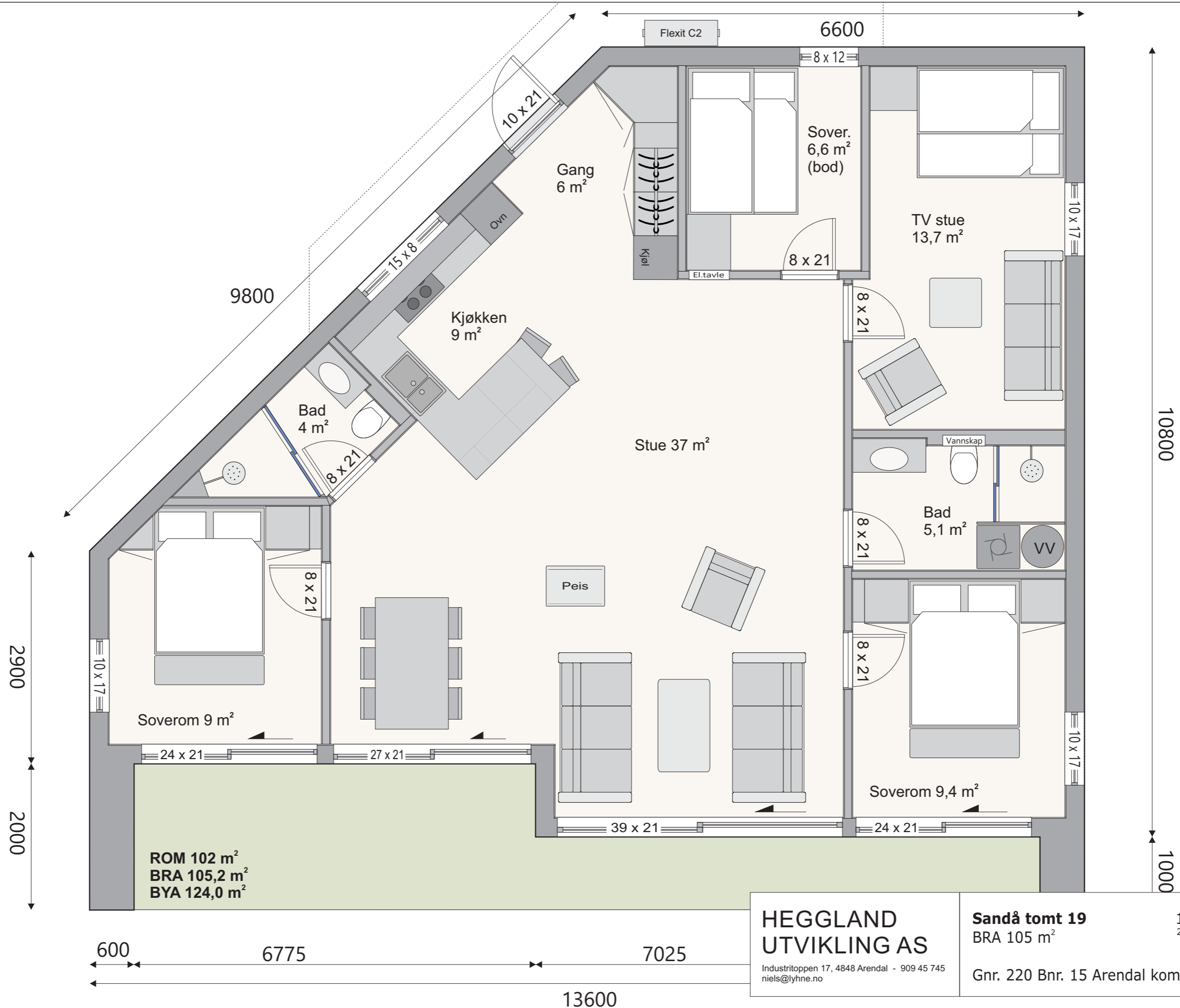


<b>HEGGLAND UTVIKLING AS</b> <small>Industritoppen 17, 4848 Arendal - 909 45 745 niels@lyhne.no</small>	<b>Sandå tomt 20</b> BRA 107,8 m <sup>2</sup>	1:50 - A3 23.02.2017 / NL
	Gnr. 220 Bnr. 15 Arendal kommune	



ROM 102 m<sup>2</sup>  
 BRA 105,2 m<sup>2</sup>  
 BYA 124,0 m<sup>2</sup>

**HEGGLAND  
 UTVIKLING AS**  
 Industritoppen 17, 4848 Arendal - 909 45 745  
 niels@lyhne.no

**Sandå tomt 19**  
 BRA 105 m<sup>2</sup>  
 Gnr. 220 Bnr. 15 Arendal kommune

1:50 - A3  
 23.02.2017 / NL

